

# BLS Resources for Safety Professionals

## Data for Safer Workplaces

---

Bruce Bergman

*BLS New York-New Jersey Information Office*

Professional Development Seminar  
Hudson River Valley Chapter  
American Society of Safety Engineers  
January 22, 2015



[www.bls.gov](http://www.bls.gov)

## Today's talk

---

- BLS introduction
- Fatal work injuries
- Nonfatal injuries and illnesses
  - ▶ Sprains, strains, and tears
  - ▶ Falls, slips, and trips
- BLS resources for safety professionals



2

## About the Bureau of Labor Statistics

- The BLS is the principal fact-finding agency for the Federal Government in the broad field of labor economics and statistics
- The BLS mission is to collect, process, analyze and disseminate data
- BLS is an *independent* statistical agency. It serves its diverse user communities by providing products and services that are objective, timely, accurate, and relevant.
- Users include the American public, Congress, Federal agencies, state and local governments, businesses, labor organizations



3

## What type of statistics does the BLS publish?

- Employment by area, industry, & occupation
- Unemployment & labor underutilization
- Wage & price trends
- Consumer spending
- Injuries & illnesses
- Labor force characteristics
- Time use



4

## BLS injury and illness statistics

---

### Census of Fatal Occupational Injuries (CFOI)

- ▶ Annual
- ▶ Includes all work-related deaths
- ▶ Published for the U.S., states, metropolitan areas, and New York City

### Survey of Occupational Injuries and Illnesses (SOII)

- ▶ Annual
- ▶ Sample-based survey
- ▶ Currently published for the U.S., 41 states, and the District of Columbia



5

## Occupational Injury and Illness Classification System (OIICS) v.2.01

---

- Released in January 2012, widespread modifications made to original 1992 version
  - ▶ Major revision to rules of selection for source, secondary source, and event
  - ▶ Addition/deletion of various codes
  - ▶ Changes to code titles
  - ▶ More detailed code descriptions
- Substantive changes; break in series



6

## Fatal work injuries

---



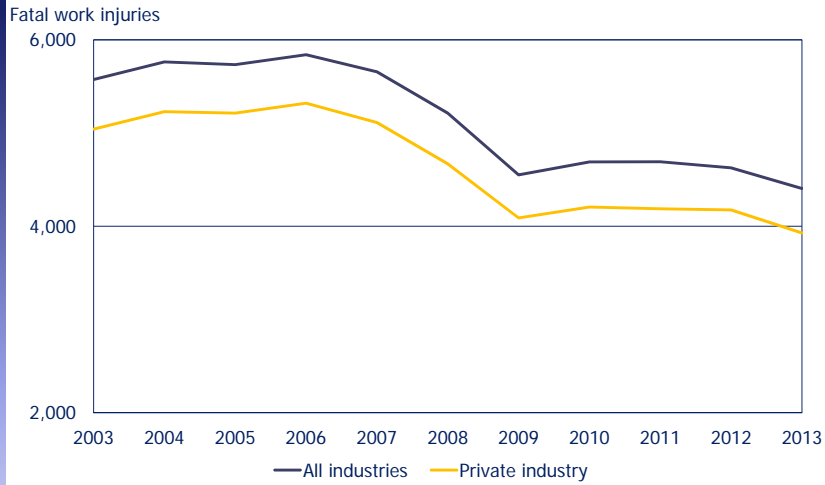
## BLS Census of Fatal Occupational Injuries (CFOI) Highlights

---

- Preliminary 2013 fatal injury total (4,405) lower than final 2012 count (4,628)
- New York statewide and New York City private sector totals decrease to series lows
- U.S. construction fatalities about the same as in 2012, following five consecutive declines

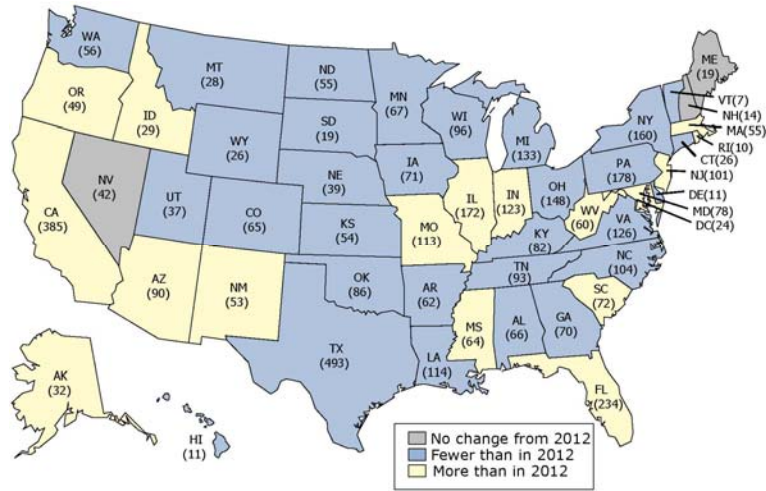


## Number of fatal work injuries, United States, 2003-2013



9

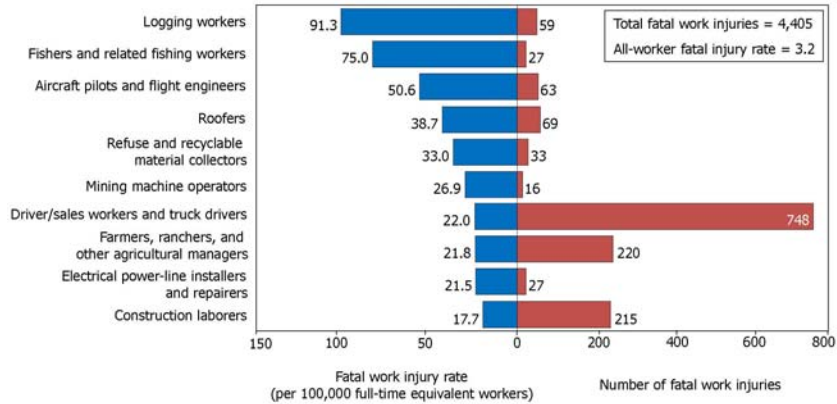
## Number of fatal work injuries, by state, 2013



Ownership=All

10

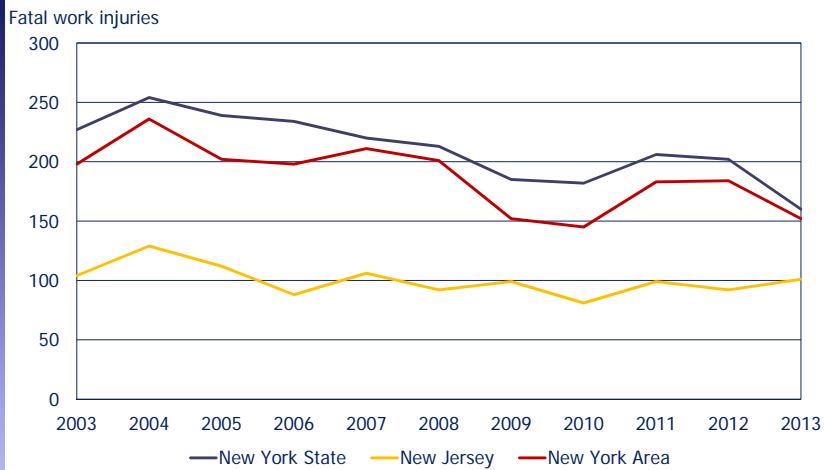
## Occupations with high fatal work injury rates, United States, 2013



Ownership=All

11

## Fatal work injuries in the New York Area, New York State, and New Jersey, 2003-2013



(All industries in private and public sector)

12

## Metropolitan area work fatalities

Metropolitan area	Fatalities, all sectors, 2012-2013
New York-Northern New Jersey-Long Island	336
New York City	132
Albany-Schenectady-Troy	25
Buffalo-Niagara Falls	21
Syracuse	15
Poughkeepsie-Newburgh-Middletown	12
Rochester	11
Utica-Rome	8
Ithaca	4

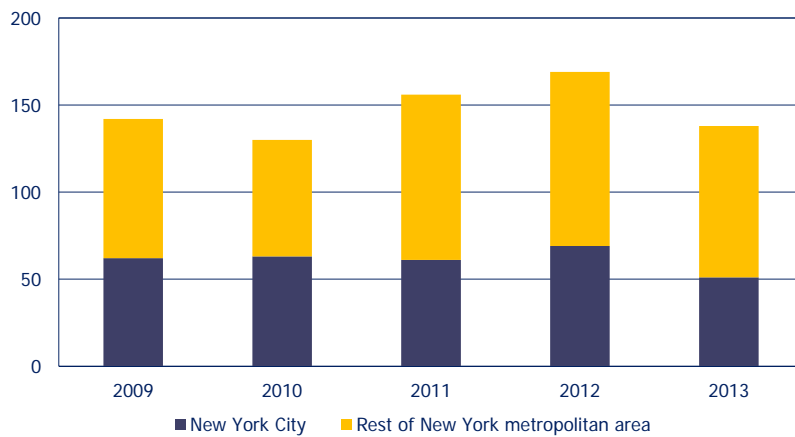


(All industries in private and public sector)

13

## Private sector work fatalities in the New York Area, 2009-2013

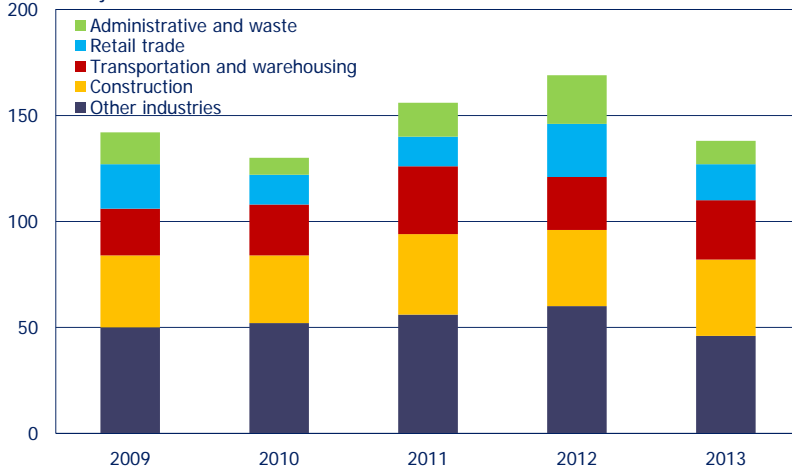
Fatal work injuries



14

## Fatal work injuries in the New York Area, by private industry, 2009-2013

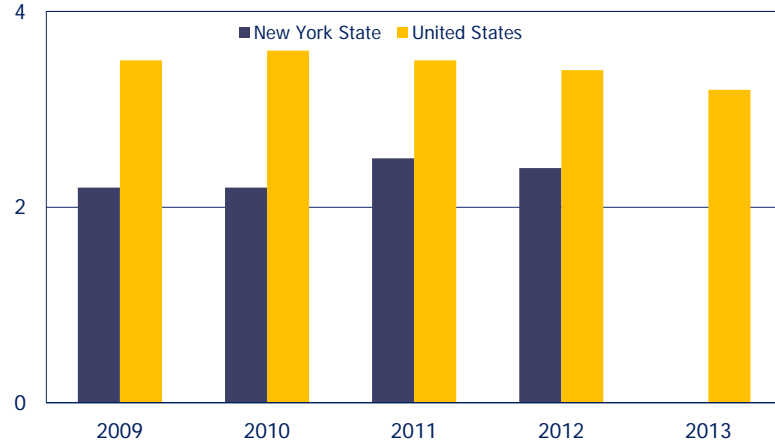
Fatal work injuries



15

## Rates of fatal work injuries, all industries, 2009-2013

Fatalities per 100,000 FTE

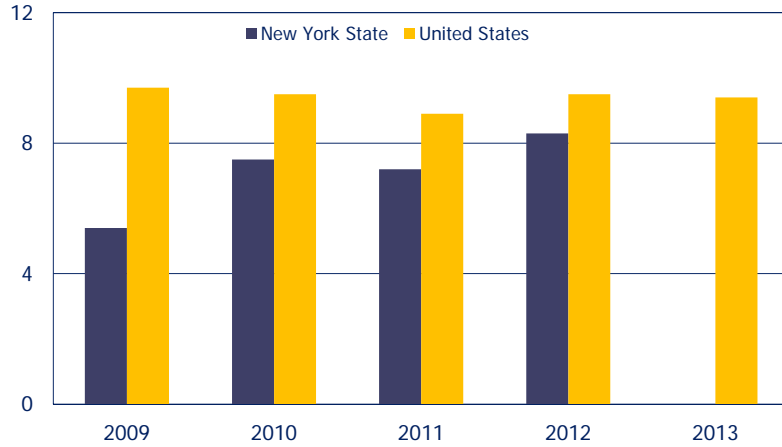


16



## Rates of fatal work injuries, construction, 2009-2013

Fatalities per 100,000 FTE



Note: Construction industry data include public and private sector

17

## Fatalities and older workers in New York State, 2013

Category	Total fatal injuries, all industries	Fatal transportation incidents	Fatal falls, slips, trips
All workers	160	49	33
Workers 55 and over	59	22	14

Category	Employment count	Employment percentage
All workers	8,925,000	100
Workers 55 and over	1,999,000	22



18

## Nonfatal occupational injuries and illnesses



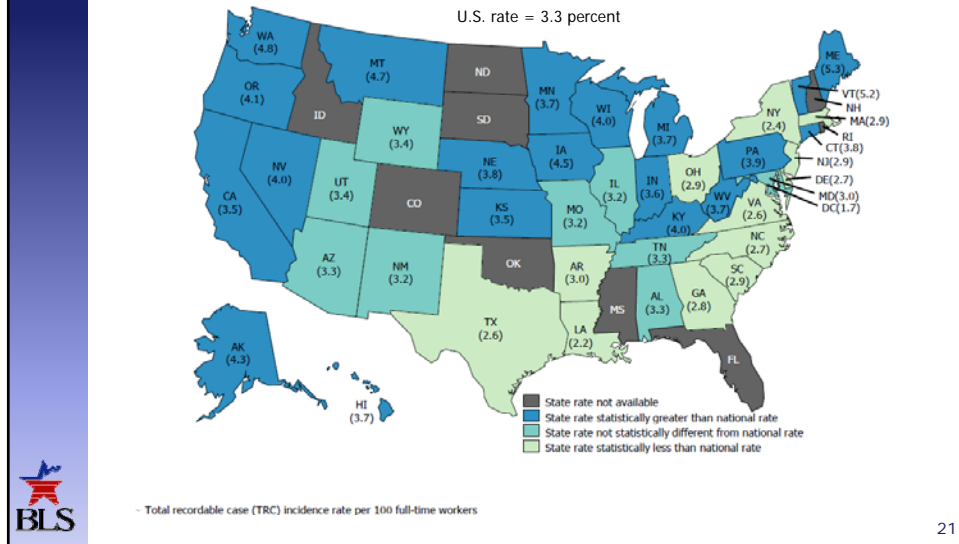
## Survey of Occupational Injuries and Illnesses (SOII) Highlights

- New York's 2013 rate (2.4) of total recordable cases in private industry was not statistically different from its 2012 rate.
- About 90 percent of private industry DART cases in New York involved days away from work, compared to 58 percent nationally
- Incidents in New York state and local government occurred at rate of 6.6, compared to 5.2 in the U.S.



20

## Nonfatal occupational injury and illness rates, private industry, 2013



## Nonfatal work injuries and illnesses in private industry, 2012-2013

Measure	2012 Number (000)	2012 Rate	2013 Number (000)	2013 Rate
<b>New York</b>				
Total cases	146.3	2.5	143.4	2.4
Cases with days away from work	70.7	1.2	73.5	1.2
<b>United States</b>				
Total cases	3,027.6	3.4	3,007.3	3.3
Cases with days away from work	918.7	1.0	917.1	1.0



Note: Rate = Incidents per 100 FTE

22

## Nonfatal work-related illnesses in private industry, 2011-2013

Area, year	Total illness rate (per 10,000 FTE)	Total illness number (000)
<b>New York</b>		
2011	13.7	7.8
2012	10.7	6.2
2013	10.0	5.9
<b>United States</b>		
2011	17.8	156.6
2012	17.3	156.2
2013	16.6	152.3



23

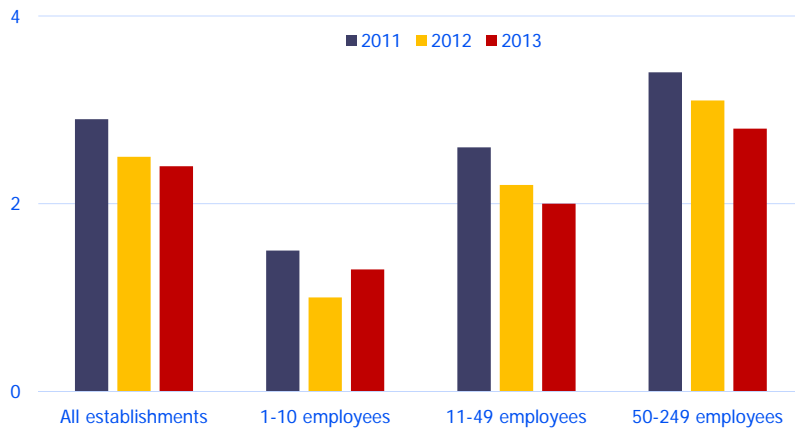
## Private sector days away cases-musculoskeletal disorders, 2013

Area	Rate (per 10,000 FTE)	Number (000)	Median days lost
New York	43.3	25.6	15
United States	33.5	307.6	11



24

## Rates of nonfatal incidents, by establishment size, New York



Ownership=Private Industry; Rates are per 100 FTE employees.



25

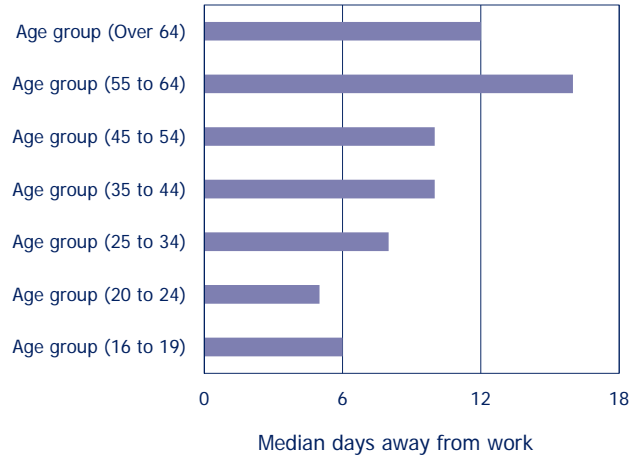
## Nonfatal incidents and older workers in New York State, 2013

Category	Total nonfatal injuries and illnesses with days away from work, private sector	Sprains, strains, tears	Falls, slips, trips
<u>COUNTS</u>			
All workers	73,510	27,390	18,230
Workers 55 and over	15,120	5,700	5,200
<u>RATES (per 10,000 FTE)</u>			
All workers	124.2	46.3	30.8
Workers 55 to 64	137.4	55.4	45.1
Workers 65 and over	96.4	23.3	40.9



26

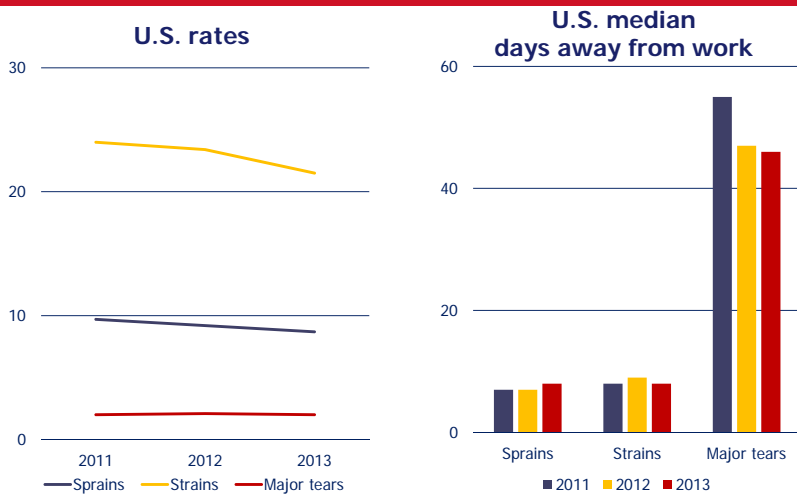
## Duration of nonfatal incidents in private sector by age, N.Y., 2013



(Duration data correspond to cases with at least one day away from work.)

27

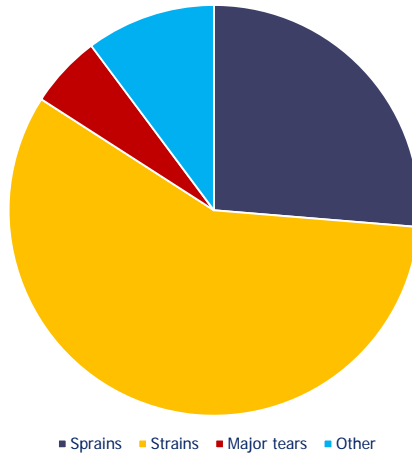
## Sprains, strains, tears resulting in days away from work, 2011-2013



28

## Nonfatal sprains, strains, tears in New York, 2013

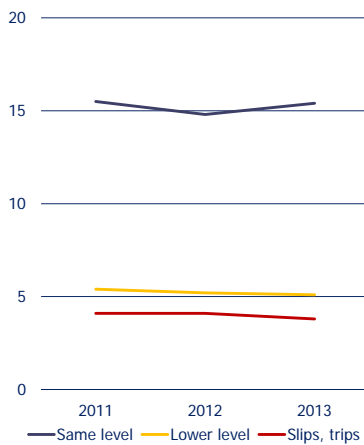
Total sprains, strains, tears, private industry = 27,390



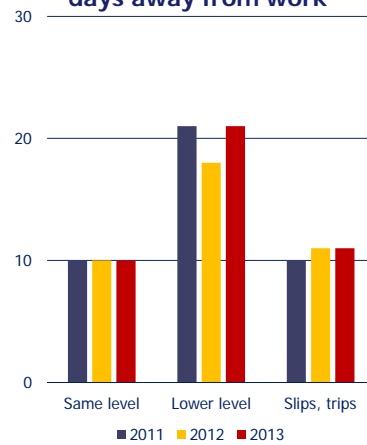
29

## Fall, slips, trips resulting in days away from work, 2011-2013

U.S. rates, private industry



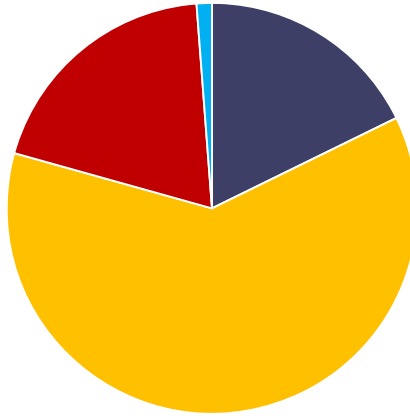
U.S. median days away from work



30

## Nonfatal falls, slips, trips in New York, 2013

Total incidents, private industry = 18,230



■ Lower level ■ Same level ■ Slips, trips ■ Other



31

## Resources for Safety and Health Professionals





# Gateway to BLS data www.bls.gov/iif

The screenshot shows the BLS website interface for 'Injuries, Illnesses, and Fatalities'. The main content area includes sections for 'Workplace Homicides', 'New safety and health data', and 'On This Page'. The sidebar on the right features 'Calculators' (Occupational Injuries and Illnesses Profiles, Incidence Rate Calculator and Comparison Tool) and 'Databases' (Occupational Injuries and Illnesses, Fatal Occupational Injuries, Nonfatal cases involving days away from work, Occupational Injuries and Illnesses Industry Data). A 'Select a subject area' section is also present.

33

# More than industry rates...

The screenshot displays the 'Industry Injury and Illness Data - 2013' page. It features a list of links for 'Summary News Release', 'Supplemental News Release Tables' (including SNR01 through SNR12), and 'Summary Tables'. The page also includes a sidebar with navigation options like 'INFORMATION FOR RESPONDENTS', 'STATE DATA', 'FACT SHEETS', 'SPECIAL RELEASES', and 'UNDERCOUNT RESEARCH'.

[www.bls.gov/oshsum/](http://www.bls.gov/oshsum/)

34

## Quartile tables for detail

TABLE Q2. Incidence rates<sup>1</sup> of days away from work, job transfer, or restriction cases, nonfatal occupational injuries and illnesses, by quartile distribution and employment size, 2013 — Continued

Industry, NAICS code <sup>2</sup> and establishment employment size	Average incidence rates for all establishments: (mean)	One-quarter of the establishments had a rate lower than or equal to: (1st quartile)	One-half of the establishments had a rate lower than or equal to: (median)	Three-fourths of the establishments had a rate lower than or equal to: (3rd quartile)
Fruit and vegetable canning, pickling, and drying (NAICS 31142)				
Total all sizes .....	2.9	( <sup>4</sup> )	( <sup>4</sup> )	3.1
11 - 49 .....	3.7	( <sup>4</sup> )	( <sup>4</sup> )	4.7
50 - 249 .....	3.0	1.2	2.6	4.8
250 - 999 .....	2.9	1.5	2.6	3.9
1,000+ .....	1.5	—	—	—
Fruit and vegetable canning (NAICS 311421)				
Total all sizes .....	3.0	( <sup>4</sup> )	1.0	4.4
11 - 49 .....	4.4	( <sup>4</sup> )	( <sup>4</sup> )	6.2
50 - 249 .....	3.0	1.3	3.1	4.9
250 - 999 .....	2.9	1.5	2.5	3.9
1,000+ .....	2.0	—	—	—
Specialty canning (NAICS 311422)				
Total all sizes .....	2.1	( <sup>4</sup> )	( <sup>4</sup> )	1.8
1 - 10 .....	—	—	—	—



35

## Safety management- Incidence rate calculator

**Enter your data from OSHA Forms**

**OSHA's Form 300A 2nd section (Total Number)**

**OSHA's Form 300A—add Column H + I + J**

**OSHA's Form 300A—Column H**

**OSHA's Form 300A—Column I**

**Choose state and sector**

<http://data.bls.gov/iirc/>



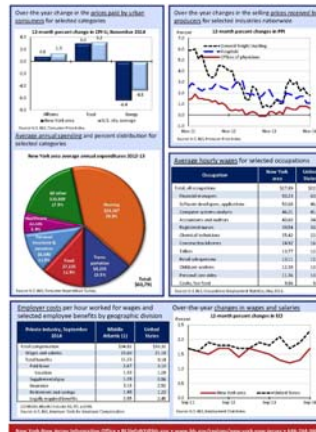
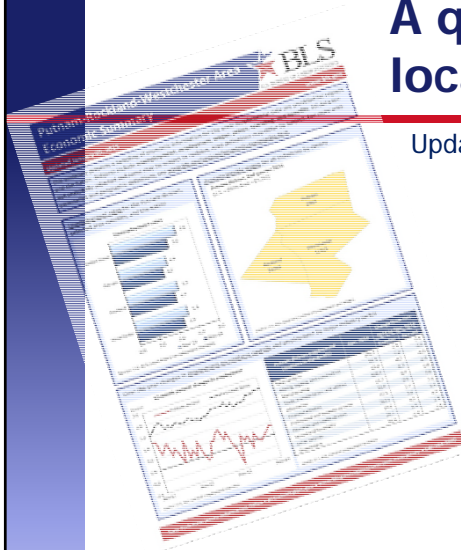
Click on "Calculate" to retrieve your incidence rates per 100 full-time employees

Case Type	Your Establishment	Private industry, New Jersey
Total	3.3	N/A
Days Away	22.3	N/A
Job Transfer/Restriction	74.2	N/A
DART	95.6	N/A



## A quick look at local area economies

Updated monthly



[www.bls.gov/regions/new-york-new-jersey/summary/home.htm](http://www.bls.gov/regions/new-york-new-jersey/summary/home.htm)



## Voluntary Cooperation

- Nearly all of our surveys are voluntary
- Confidentiality is as important to the Bureau as it is to respondents
- We do our best to reduce respondent burden
- Without the cooperation of the people who participate in its surveys—people like you—the Bureau of Labor Statistics could not provide high-quality information about the economy to you
- We greatly appreciate the cooperation of our survey respondents. Thank You!!



39

## Regional Information Offices At Your Service!

- **New England (Boston):** (617) 565-2327
- **New York-New Jersey (New York):** (646) 264-3600
- **Mid-Atlantic (Philadelphia):** (215) 597-3282
- **Southeast (Atlanta):** (404) 893-4222
- **Midwest (Chicago):** (312) 353-1880
- **Southwest (Dallas):** (972) 850-4800
- **Mountain-Plains (Kansas City):** (816) 285-7000
- **West (San Francisco):** (415) 625-2270



40

# Contact Information

---

**Bruce Bergman**

*New York-New Jersey Information Office*  
[www.bls.gov/regions/new-york-new-jersey/](http://www.bls.gov/regions/new-york-new-jersey/)

646-264-3623  
bergman.bruce@bls.gov



[www.bls.gov](http://www.bls.gov)